

Design 5368, Sweater



Size: to fit 0/3 months, 6/9 months and 12/18 months. Directions for the smaller size are before the stroke, with larger sizes behind. If there is only one figure, it applies to all sizes. All measurements are in centimeters (cm). For approximate inch sizes simply multiply by 0.4.

Materials: yarn **Schachenmayr original, quality Catania**, 150(150/200) g # 00115 red, 50(50/100) g # 00389 lime, 50 g each # 00208 canary and # 00281 tangerine. For the embroidery oddments or 50 g each #00247 sky and #00124 navy.

Size 1-4 [2.75-3.75 mm] circular needle and one size C/2-D/3 [2.5-3 mm] crochet hook, or size to obtain gauge, plus one blunt embroidery needle.

Accessories: 3 buttons.

Welt pattern: alt K1, P1.

Stockinet stitch (st-st): K RS rows; PWS rows; in rounds K all sts.

Band: work in st-st foll chart A using the circular needle. Slide the sts. to that end of the needle where the resp yarn is. Chain stitch the vertical lines on at the end be-

tween 2 sts; rep motif of 11 sts. on either#side of the 3 center sts. throughout. Work rows 1-29 once.

Butterfly: work in st-st in intarsia technique over the 37 sts. at center of front foll chart B. Use a sep ball for each col, twisting yarn at back of work to prevent holes from forming. The trunk is crochet and sewn on at the end. Work rows 1-34 once.

Gauge: 26 sts. and 36 rows st-st, each to 4" [10 cm] on size 1-4 needles.

METHOD

Back: cast on 74(84/94) sts. Lime and work 8.5 cm = 2 rows welt patt, then 29 rows st-st for band, inc 1 st. on 1st row = 75(85/95) sts. Cont in st-st in red, starting with 1 RS row. When work measures 19.5(23.5/27.5) cm (70(84/98) rows) from band bind off 17(21/21) sts. at center for neck and finish each side sep. At neck edge bind off on every 2nd row 3 sts. Once and 2 sts. once. When work measures 21(25/29) cm (76(90/104) rows) from welt bind off 24(27/32) sts. for right shoulder. Cont even in st-st for another 2 cm over 24(27/32) sts. for underlap of left shoulder, then bind off all sts. Total height of work 31.5(35.5/39.5) cm.



Front: proceed as for back except for neck. Also after 14(22/28) rows = about 4(6/7.5) cm from band start with butterfly over 21 center sts., and after another 34 rows cont over all sts. In red. When work measures 17.5(21.5/25.5) cm (64(78/92) rows) from band bind off 15(19/19) sts. at center for neck and finish each side sep. At neck edge bind off on every 2nd row 3 sts. once, 2 sts. once and 1 st. once. At the same

Design 5368, Sweater

time, when neck shaping measures 1.5 cm (6 rows) work 3 buttonholes in right front only as foll: work 5(6/9) in patt, bind off 2, 5(6/7) in patt, bind off 2, 5(6/7) in patt, bind off 2, 3 in patt. On next row cast on 2 over those bound off. When work measures 29.5(33.5/37.5) cm altog bind off rem 24(27/32) sts. on either side for shoulders.

_ cast on 38(42/48) sts. in lime and work 8.5 cm = 2 rows welt patt, then cont in st-st. Work 29 rows band, inc 1 st. on 1st row = 39(43/49) sts. Cont in st-st with red, starting with a RS row. At the same time inc for sleeve shaping at each end 1 st. on every 4th row 13(13/14) times and 1 st. on every 2nd row 0(3/4) times = 65(75/85) sts. When work measures 15(17/19) cm (55(61/69) rows) bind off all sts.

Finishing:

Embroidery: embroider chain st. with tangerine and red over borders foll stitch diagram A.

For the butterfly's trunk crochet with sky 27 ch + 1 ch for turning and work 2 rows sc. Then for head work 5 sc onto the adjoining narrow side and 2 rows sc onto this. With navy embroider 2 eyes with French knots and v-shaped straight

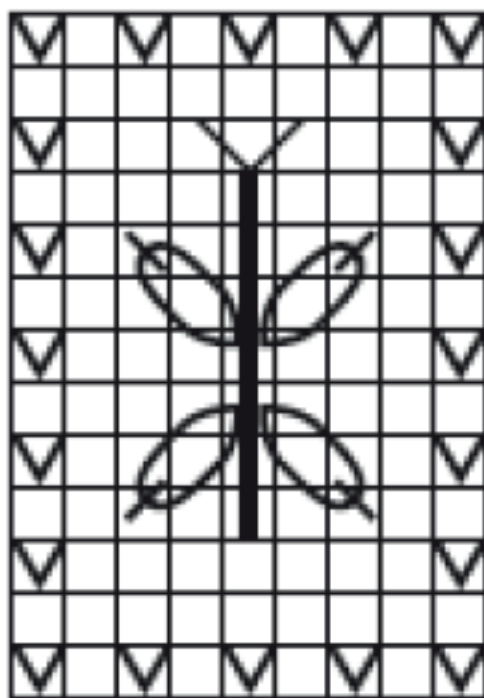
sts. onto trunk. Sew trunk in position.

Embroider feelers with navy using bullion sts as foll: bring needle out just above the head, wind yarn around needle about

10 times, then insert needle again about 2 cm above head and bring yarn through the windings. Embroider wings foll stitch diagram B, then embroider chain sts. In red around the wings.

Onto center back embroider a motif about 5 cm below neck edge foll stitch diagram. For edging duplicate stitch in sky, each 1 st. wide and 1 st. high. With navy embroider the butterfly's trunk with bullion sts. and the feelers with straight sts. Embroider the upper wings using lazy daisy stitch with canary, and the lower panels with lime. Block pieces to measurements, cover with a damp cloth and allow to dry. Join right shoulder seam. For neck band pick up about 64(72/72) sts. red around neck edge and work 3 rows st-st, then bind off all sts. Crochet 1 row picots lime along neck edge as foll: attach yarn with 1 sl-st, then 1 sc, 3 ch and 1 sc into 1st ch, miss 1 st, rep from, end with 1 sl-st into band. Sew buttons to underlap. Sew sleeves in position, then join sleeve and side seams.

Stitch diagram for back



Design 5368, Sweater

Chart A

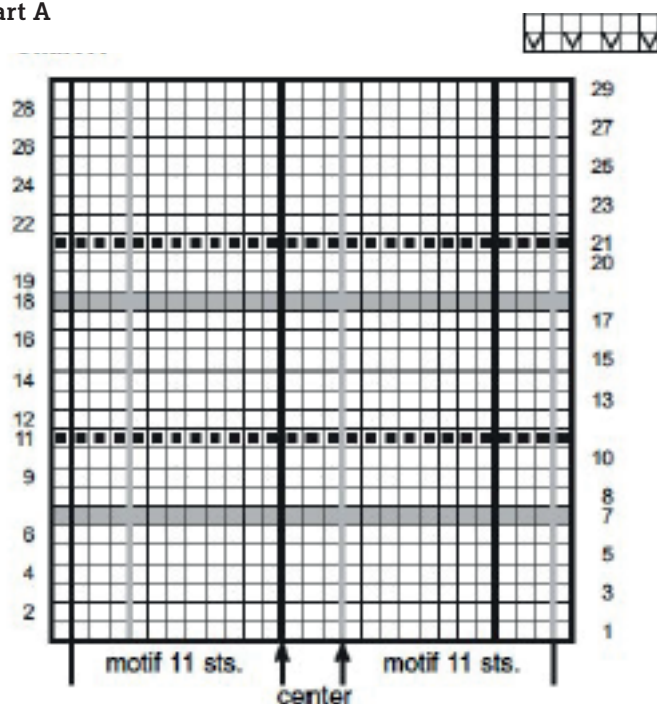
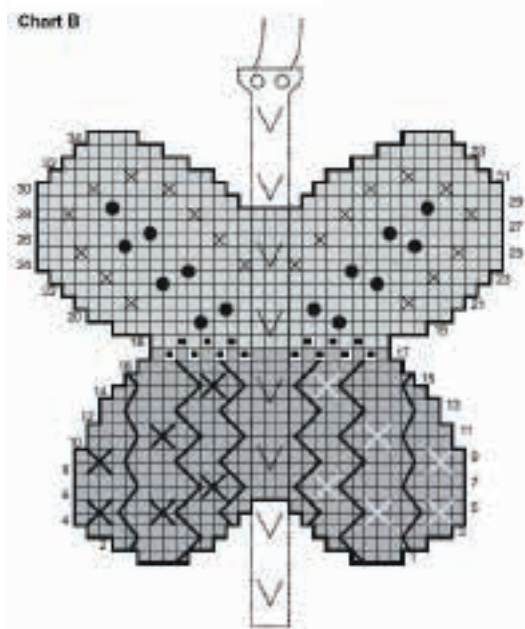


Chart B



Legend

Chart A

□ = lime, K1 on RS rows; P1 on WS rows
 ■ = tangerine K1 on RS rows; P1 on WS rows
 ■ = red K1 on RS rows; P1 on WS rows
 | = chain stitch 1, red
 | = chain stitch 1, tangerine

Chart B

The crochet trunk of butterfly's body is shown by dotted lines.

■ = tangerine K1 on RS rows; P1 on WS rows
 □ = canary K1 on RS rows; P1 on WS rows
 ■ = red duplicate stitch 1
 X = canary 1 cross stitch 2 sts. wide and 2 rows high

X = red 1 cross stitch, 2 sts. wide and 2 rows high

X = lime, 1 cross stitch, 1 st. wide and 1 st. high

● = French knot; tangerine

Trunk

V = straight sts., navy

|| = bullion sts., navy

○ = French knots, navy

Measurements

